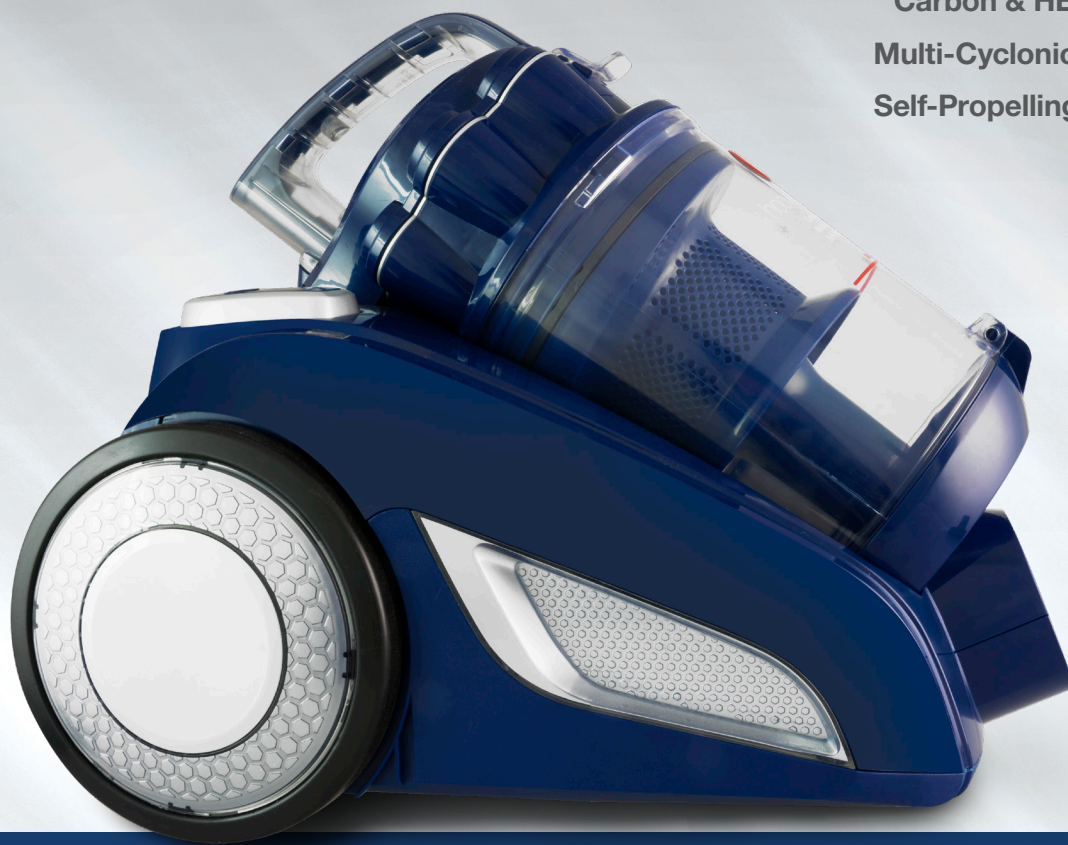


Bagless Vacuum Cleaner with Deep Cleaning Powerhead

Carbon & HEPA Filtration

Multi-Cyclonic Technology

Self-Propelling Powerhead



allergy+



7011PH Allergy

Congratulations on the purchase of your new HOOVER vacuum cleaner. There are many useful features built into your vacuum cleaner. We recommend that you carefully read this instruction manual for the best results.

Features:

1. Handle
2. On/Off Button (Powerhead)
3. Air Relief Valve
4. Handle Release Button
5. Hose
6. Telescopic Tube
7. Blockage Indicator (not shown)
8. On/Off Button (not shown)
9. Dust Container Handle
10. Dust Container Release Button
11. Cable Rewind Button
12. Power Cable
13. Dust Container
14. Hose Inlet
15. Accessory Storage Compartment (not shown)
16. Powerhead Height Adjustment Button
17. Powerhead

Accessories:

18. Combination Floor Tool
19. Mini Hand Turbo Brush
20. Dusting Brush
21. Crevice Tool
22. Upholstery Tool
23. Flexible Brush

Specifications:

Max Power: 1500W (1600W with Powerhead)

Dust Capacity: 1.75L

Noise Level: 70dBa

Telescopic Tube: Aluminium

Power Cable Length: 6m

Hose Length: 1.9m

Weight: 8.06Kg

Please contact Godfreys customer support and service hotline Australia on 1800 815 270 or New Zealand on 0800 282 288 to find your local spare parts provider.

Hoover® trademark is a registered trade mark of Techtronic Cordless GP and is used under licence.

Before you Begin

This cleaner must be operated in accordance with these instructions and used only for domestic household cleaning to remove DRY dirt and dust from household carpets, flooring, walls and fabrics. This cleaner is not fit to be used as an industrial cleaner and will void the manufacturer's warranty if used inappropriately.

Please read these instructions thoroughly. This will ensure you obtain full benefit from your new cleaner. Keep this Instruction Manual in a convenient and safe place for future reference.

Important

Always switch the cleaner off and remove the power plug from the electricity supply before cleaning your appliance, when not in use, or attempting any maintenance task. The cleaner must only be connected to an AC power supply at the voltage shown on the rating plate. This cleaner should only be used for its intended purpose as described in these instructions.

Precautionary Measures:



1. **Do not** operate the vacuum cleaner too close to heaters, radiators or other hot surfaces.



2. Before inserting the power plug into the power supply, make sure your hands are dry.



3. Before turning on the vacuum cleaner, remove any large objects from the floor or cleaning surface in order to prevent damage to the filter.



4. When you want to pull the power plug from the power supply, **do not** use the power cable, gently pull the power plug from the power socket.



5. Do not use the vacuum cleaner to pick up water or liquids.



Safety Precautions & Warnings

IMPORTANT! Always switch off the cleaner and remove the power plug from the electricity power supply before cleaning your appliance, when not in use or attempting any maintenance task. The cleaner must only be connected to an AC power supply at the voltage shown on the rating label. This cleaner should only be used for its intended purpose as described in this instruction manual. Never operate the vacuum cleaner without filters.

When using your vacuum cleaner, basic precautions should always be observed, including the following:

1. This appliance is not intended for use by persons (including children) with reduced physical, sensory or mental capabilities or lack of experience and knowledge, unless they have been given supervision or instruction concerning use of the appliance by a person responsible for their safety.
2. Children should be supervised to ensure that they do not play with the vacuum cleaner.
3. Keep ends of the hose, telescopic tube and other openings away from your face and body.
4. Do not operate the vacuum cleaner too close to heaters, radiators or other hot surfaces.
5. Do not use the appliance to pick up flammable items or combustible liquids (i.e. petrol, hot ashes, cigarettes, matches, explosive materials or anything burning) or use in areas where such substances or items may be present.
6. Do not use the appliance to pick up toxic materials (i.e. chlorine, bleach, ammonia).
7. Before vacuuming, remove any large objects from the floor or cleaning surface in order to prevent damage to the filter.
8. Always check the power cord before use. The power cord and the power plug should be in a good condition and must not be damaged. If the power supply cord is damaged or defective, it must be replaced by the manufacturer, its service agent or similarly qualified persons in order to avoid a hazard.
9. Do not extend the power cable beyond the yellow mark.
10. Do not pull or carry the appliance by the power cable, use the power cable as a handle or pull the power cable around edges or corners. Avoid running the appliance over the power cable.
11. Ensure the appliance is switched off before unplugging.
12. Do not unplug by pulling on the power cord. To unplug, grasp the power plug not the power cord and gently pull the power plug from the power socket. Use only Australian and New Zealand electrical safety approved extension cords.
13. Hold the power plug when rewinding the power cord. To prevent accidental injury do not allow the power plug to whip when rewinding.
14. Do not handle or operate the appliance with wet hands. Follow electrical safety precautions at all times.
15. To prevent electrical shock, do not immerse the appliance, power cord or power plug into water or any other liquids.
16. Do not use the machine to vacuum water or liquids, this vacuum is for dry household use only.

17. To prevent electrical shock, do not use the vacuum cleaner outdoors or on wet surfaces.
18. Extreme caution should be exercised when using the appliance on stairs.
19. Never clean the vacuum cleaner or any of the electrical parts, especially the electrical connections with water or liquid cleaners.
20. Do not attempt to change the attachments while the appliance is plugged into the mains power supply. First switch off and remove the power plug from mains power supply. Use only the manufacturer's recommended accessories.
21. Ensure the appliance is disconnected from the mains power supply before connecting the hose to the unit.
22. Do not operate or use the appliance without the dust bag and/or filters in place.
23. If the air inlet, floor head or the telescopic tube is blocked, switch off the cleaner straight away and disconnect the power plug from power supply. First clear the blocked object before attempting to start the cleaner again.
24. Do not leave the appliance unattended when it is connected to a mains power supply.
25. Before carrying out any maintenance service or cleaning the filters, always switch off the vacuum cleaner and disconnect the power plug from power supply.
26. Do not use the vacuum cleaner if it is damaged or breaks down. Check the electrical components regularly for defects. If connection cables, electrical hoses, electrical contacts and electric tubes are damaged, have them replaced immediately.

27. Never attempt to make any modifications to the vacuum cleaner.
28. Always store the appliance indoors, in a cool, dry place.
29. Damage caused by improper use or by not observing the instructions in this manual will void the warranty.

Vacuum Cleaner with Powerhead

1. The electric hose contains electrical connections;
 - Do not immerse in water.
 - The hose should be checked regularly and must not be used if damaged.
 - The vacuum cleaner handle contains electrical connections. The handle is not a serviceable part.
 - The vacuum cleaner rod contains electrical connections. The rod is not a serviceable part.
 - The vacuum cleaner powerhead contains electrical connections. The powerhead is not a serviceable part.
2. Use the powerhead only for vacuuming dust and dry substances in the home.
3. To avoid damage to the power cable never run over the power cable with the powerhead.
4. Never touch the brush roller while the vacuum cleaner is connected to the mains power supply.
5. To prevent unnecessary wear on the powerhead, keep the powerhead moving while in operation.
6. Keep hair, hands and feet away from the rotating brush while the powerhead is running.



Assembly



IMPORTANT! Always remove the power plug from the power supply before fitting or removing accessories! **LIVE PARTS** within the hose, rod and powerhead.



1. Flexible Hose

Fitting:

Insert the flexible hose into the hose inlet of the vacuum. Press until it clicks into position.

Removing:

Press the two buttons and gently pull to release the flexible hose.



2. Handle & Rod

Note: Ensure that the powerhead switch located on the handle is in the “Off” position before fitting the handle to the rod. When not using the powerhead, ensure that the Powerhead On/Off Button is in the “Off” position.

- a. Gently insert the handle into the telescopic tube and push until it clicks into place.
- b. Place the powerhead onto the floor and gently insert the telescopic tube into the powerhead. Push until it clicks into place.



Before you Begin

Accessories



Powerhead

Deeply cleans carpets by effectively lifting and removing deeply embedded dust and dirt. The height of the powerhead can be adjusted to be used on different types of carpet.

Note: not recommended for use on hard floors.

WARNING! Seek advice from carpet manufacturers before using the motorised powerhead on woollen or delicate carpets.



Carpet



Hard Floors

Combination Floor Tool

This multi purpose combination floor tool easily switches from a carpet cleaning tool to a hard floor cleaning tool.



Crevice Tool

Eliminates dust from hard to reach places such as from corners and in between cushions.

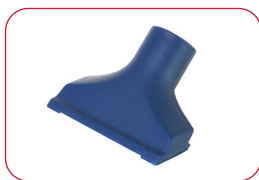


Dusting Brush

Cleaning blinds, bookshelves and lampshades is made easy with this dusting brush.

Note: The Crevice Tool & Dusting Brush are stored in the Accessory Storage Compartment. To access the compartment, press the Dust Container Release Button to remove the dust container.





Upholstery Tool

For vacuuming furniture and upholstery.



Mini Hand Turbo Tool

Ideal for removing pet hair from upholstery and furniture. This accessory features a transparent case so that you can easily see and remove any blockages that may occur.

Safety Precautions:

1. Keep hair, hands and feet away from the rotating brush while the turbo brush is running.
2. Do not run the turbo tool over electric cables and string.
3. Do not use the turbo tool on pets.
4. The turbo tool will operate when it is connected to a running vacuum. If children are present, make sure to turn the vacuum off and unplug the power plug from the power supply when leaving the turbo tool unattended.
5. Do not attempt to service or unclog the turbo tool while the vacuum is running.



Flexible Brush

Removing dust from hard to reach places like shelves, bookcases and cupboards is made easy with this flexible brush attachment.

Instructions for Use

IMPORTANT! Always remove the power plug from the power supply before fitting or removing accessories.



Turning On/Off the Cleaner

1. Unwind a sufficient length of cable. The yellow mark on the power cable shows the ideal cable length.
DO NOT extend the cable beyond the red mark.
2. Insert the power plug into the power supply.
3. Press the On/Off button to turn the vacuum On or Off.



Using the Handle

1. Press the On/Off button on the handle to operate the powerhead.
2. The Air Relief Valve can be used to regulate the suction power. To reduce the suction power, push the Air Relief Valve backwards.



Rewinding the Power Cable

1. Press the On/Off Button to turn off the vacuum.
2. Unplug the power cable from the power supply.
3. To rewind the power cable, press the Cable Rewind Button with one hand and guide the power cable with the other hand to ensure that it does not whip.



Maintenance

IMPORTANT! Always remove the power plug from the power socket before performing any maintenance.

Vacuum Cleaner Storage

When not in use, ensure that the cleaner is disconnected from the power supply and that the cable is fully retracted. The combination floor tool can be stored in the floor park clip. The powerhead must be stored separately.

Emptying the Dust Container



1. Press the Dust Container Release Button to remove the dust container from the cleaner.

Note: the dust container should be emptied before dust and debris reaches the “MAX” line.



2. Hold the dust container over a rubbish bin and press the Dust Release Button to empty the dust container.
3. Reinsert the dust container into cleaner ensuring that it clicks into place.

Maintenance (continued)

Cleaning the Mini Hand Turbo Brush

WARNING! Ensure the Mini Hand Turbo Brush is disconnected from the cleaner when performing any maintenance.



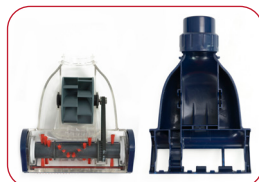
1. To remove the clear cover the collar lock must be in unlocked by twisting the collar lock anticlockwise.



2. The rotating bristles must be unlocked and in the upward position. To unlock the rotating bristles push the lock button on the side of the turbo brush to the downward position.



3. Remove the clear cover.



4. Remove any dirt or hair from the roller brush.





5. Replace the clear cover.
6. Lock the collar lock by twisting clockwise.
7. Rotate the rotating bristles to the downward position and lock into place by pushing the lock button on the side of the turbo brush to the upward position.

Cleaning and Replacing the Pre-Motor Filter

IMPORTANT! Always remove the power plug from the power supply before fitting or removing accessories.



Caution: To avoid damaging the dust container remove the dust container from the cleaner before cleaning or replacing the dust bin filter.

1. Lift the Dust Bin Lid Lever to access the Pre-Motor filter.



2. The filter can be cleaned using lukewarm water. Alternatively, the filter can be replaced with a new filter.

Caution: Ensure that the filter is dry before reinstalling back into the cleaner.

Note: It is recommended to replace the filter every 6 months or when it becomes visibly dirty.

Maintenance (continued)

Blockage Indicator



If the Blockage Indicator light turns red, this indicates that there is a blockage in the cleaner. If this happens, switch off the cleaner and remove the power plug from the power supply. Check that there are no blockages in the filters, hose and hose inlet. Empty the dust container.

Cleaning and Replacing the Rear Motor HEPA and Carbon Filter



The Rear Motor HEPA and Carbon Filter is installed behind the exhaust grille. This HEPA filter is washable, however frequent washing of the carbon filter can reduce the life of the carbon filter. When dust or dirt is visible on the surface of the HEPA filter, the filter should be replaced or washed with lukewarm water to maintain efficient suction.

Note: It is recommended to replace the HEPA filter every 6 months or when it becomes visibly dirty.



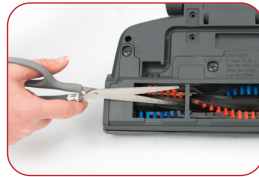
Cleaning the Agitator Bar

WARNING! Ensure that the cleaner is disconnected from the power supply and the powerhead is disconnected from the rod before performing any maintenance.



Note: The agitator bar must be free of debris for effective cleaning and for maximum suction.

1. Disconnect the motorised powerhead from the vacuum rod and turn it over to inspect the agitator bar.
2. If a build-up of debris is wound around the agitator bar, remove by carefully cutting with scissors. Avoid damaging or cutting the bristles.



Maintenance (continued)

Replacing the Powerhead Drive Belt & Agitator Bar



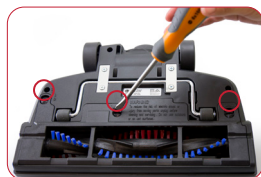
WARNING: To reduce the risk of electric shock, ensure that the power is switched off and the power plug is disconnected from the power supply before performing any cleaning, maintenance or troubleshooting checks. Failure to do so may result in electric shock or personal injury.

CAUTION! The powerhead, hose and rod contain electrical connections. The powerhead, hose and rod are not serviceable parts. Please return the product to your nearest Godfreys store if the powerhead, hose and/or rod are faulty.

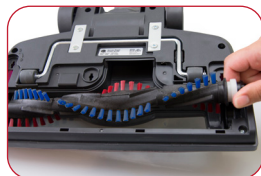


Depending on frequency of use, the motorised powerhead drive belt will occasionally require changing.

1. Disconnect the powerhead from the telescopic tube.

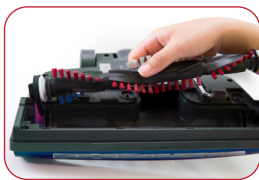


2. Turn the powerhead upside down and turn the three locking rods anti-clockwise to unlock the bottom plate.

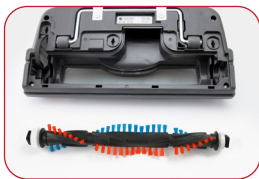


3. Firstly lift the side of the rotating brush without the belt attached. Then lift the end cap where the belt loops around.





4. Slide the old belt off the drive shaft and then the end cap. If the belt is broken, remove all the broken pieces.
5. Place the new belt over the drive shaft first and then the end cap. Make sure the lettering on the belt is outward facing. Insert the end cap into the groove.



6. Holding the rotating brush, insert it into the end cap first and then into the groove on the opposite side.
7. Replace the bottom plate.

Troubleshooting

Problems and Solutions

Please contact Godfreys customer support and service hotline Australia on 1800 815 270 or New Zealand on 0800 282 288 to find your local spare parts provider.

Fault	Solutions
The cleaner will not turn on.	Check that the power cable is inserted securely; remove from the power supply and then reinsert into the power supply. Check that the On/Off Button is in the "On" position.
The vacuum performance is deteriorating.	Switch off the machine. Check the appliance to ensure there are no blockages. Clear any blockages that may be found. Check that the pre-motor filter is not dusty; clean or replace the pre-motor and rear-motor filters. Clean the remaining dust inside the dust container and blue cyclone filter.
The cleaner makes an abnormal sound when switched on.	Turn off the cleaner immediately. Check the appliance to ensure there are no blockages. Clear any blockages that may be found. Check the dust container or powerhead is installed securely.
Powerhead not working.	Check that the On/Off button is in the "On" position. Check the installation of the powerhead is correct. Turn off the cleaner, let it cool down for 20 mins. Clean any big objects trapped around the agitator bar. Check there is no object pressing the top of the powerhead. Adjust the height of the powerhead to suit the area to be cleaned.
Hand turbo tool is not working.	Ensure there are no blockages in the brush roller of the hand turbo tool.



Spare Parts

Part	Part Number
Hose	31220477
Dust Bin	33151826
Power Head	11400129
Filter (Pre-motor & Rear Motor Filters)	32200888
Agitator Bar	33701796



allergy

Bagless Vacuum Cleaner with Deep Cleaning Powerhead

Conditions of warranty

Your Hoover cleaner, in the case of domestic use, has a two year parts and labour warranty against product defects and failures when the product is used in accordance with the terms and conditions of this warranty statement.

This warranty commences from the original date of purchase and is not transferable; please retain your original proof of purchase for any warranty claims. This warranty is valid only in the country where the cleaner is purchased.

The cleaner must be operated in accordance with these instructions and used only for domestic household cleaning to remove DRY dirt and dust from household carpets, flooring and fabrics. This cleaner is not fit to be used as an industrial cleaner, and is not designed for the collection of vitreous building material including particle board, construction products and similar products such as wood/fibres, cement, fillers, fibre glass etc or excessive or frequent sand. The infrequent pick-up of these materials in these circumstances may be harmful to your cleaner and may void the manufacturer's warranty.

Accessories and consumables including dust bags and filters, unless defective in manufacture, are not subject to this warranty. In order to prolong the life of accessories and consumables, regular care and maintenance is recommended.

When properly used and cared for, your cleaner will render excellent service; refer to the instruction manual for further details, as misuse or failure to follow the instructions makes this warranty void.

In the event of service or advice being needed, please contact Electrical Home-Aids Pty. Limited, Level 1, Building 3, Brandon Business Park, 530 Springvale Road, Glen Waverley Victoria 3150, or on 1800 815 270 (AUS) or 0800 282 288 (NZ), Monday-Friday 9am-5pm EST. The decision to repair or replace the cleaner is at the sole discretion of Electrical Home-Aids Pty. Limited. If Electrical Home-Aids Pty. Limited decide to repair or replace the cleaner, it will do so at its own cost.

Electrical Home-Aids Pty. Limited is unable to accept responsibility under this warranty for any repair work not carried out by an authorised Service Agent or from the use of non-genuine parts. If any part is no longer available or manufactured, Electrical Home-Aids Pty. Limited will replace it with a genuine functional replacement part. This warranty does not apply to the cost of replacing any parts of the product due to normal wear and tear, alterations, improper installation, physical abuse, misuse or accidental damage. Any transportation costs involved in the repair of defective parts shall be borne by the claimant.

If proof of purchase cannot be provided at the time of a warranty claim or service, any work carried out on the cleaner is chargeable.

The repair of the cleaner under this warranty does not extend the original period of warranty.

The benefits conferred by this warranty are in addition to all other rights and remedies in respect of the product as outlined under the Competition and Consumer Act and other State and Territory laws.

"Our goods come with guarantees that cannot be excluded in the Australian Consumer Law. You are entitled to a replacement or refund for a major failure and for compensation for any other reasonably foreseeable loss or damage. You are also entitled to have the goods repaired or replaced if the goods fail to be of acceptable quality and the failure does not amount to a major failure."



Register warranty online

www.godfreys.com.au

www.godfreys.co.nz

Customer Support & Service Hotline

AUS: 1800 815 270

NZ: 0800 282 288