

Bagged Vacuum Cleaner with Deep Cleaning Powerhead

High Efficiency Motor

Carbon & HEPA Filtration

Self-Propelling Powerhead



allergy+



7000PH Allergy

Congratulations on the purchase of your new HOOVER vacuum cleaner. There are many useful features built into your vacuum cleaner. We recommend that you carefully read this instruction manual for the best results.

Features:

1. Handle
2. On/Off Button (Powerhead)
3. Air Relief Valve
4. Handle Release Button
5. Hose
6. Telescopic Tube
7. Suction Control Dial
8. Cable Rewind Button
9. On/Off Button
10. Handle
11. Exhaust Filter Grille (not shown)
12. Power Cable (not shown)
13. Hose Inlet
14. Dust Bag Cover Release
15. Powerhead Height Adjustment Pedal
16. Powerhead

Accessories:

17. Combination Floor Tool
18. Mini Hand Turbo Brush
19. Dusting Brush
20. Crevice Tool
21. Upholstery Tool
22. Flexible Brush

Specifications:

Max Power: 1500W (1600W with Powerhead)

Dust Capacity: 2.2L

Noise Level: 71dB

Weight: 10.2Kg

Telescopic Tube: Aluminium

Power Cable Length: 10m

Hose Length: 1.9m

Weight: 10.2Kg

Please contact Godfreys customer support and service hotline Australia on 1800 815 270 or New Zealand on 0800 282 288 to find your local spare parts provider.

Hoover® trademark is a registered trade mark of Techtronic Cordless GP and is used under licence.

Before you Begin

This cleaner must be operated in accordance with these instructions and used only for domestic household cleaning to remove DRY dirt and dust from household carpets, flooring, walls and fabrics. This cleaner is not fit to be used as an industrial cleaner and will void the manufacturer's warranty if used inappropriately.

Please read these instructions thoroughly. This will ensure you obtain full benefit from your new cleaner. Keep this Instruction Manual in a convenient and safe place for future reference.

Important

Always switch the cleaner off and remove the power plug from the electricity supply before cleaning your appliance, when not in use, or attempting any maintenance task. The cleaner must only be connected to an AC power supply at the voltage shown on the rating plate. This cleaner should only be used for its intended purpose as described in these instructions.

Precautionary Measures:



1. **Do not** operate the vacuum cleaner too close to heaters, radiators or other hot surfaces.



2. Before inserting the power plug into the power supply, make sure your hands are dry.



3. Before turning on the vacuum cleaner, remove any large objects from the floor or cleaning surface in order to prevent damage to the filter.



4. When you want to pull the power plug from the power supply, **do not** use the power cable, gently pull the power plug from the power socket.



5. Do not use the vacuum cleaner to pick up water or liquids.



Safety Precautions & Warnings

IMPORTANT! Always switch off the cleaner and remove the power plug from the electricity power supply before cleaning your appliance, when not in use or attempting any maintenance task. The cleaner must only be connected to an AC power supply at the voltage shown on the rating label. This cleaner should only be used for its intended purpose as described in this instruction manual. Never operate the vacuum cleaner without filters.

When using your vacuum cleaner, basic precautions should always be observed, including the following;

1. This appliance is not intended for use by persons (including children) with reduced physical, sensory or mental capabilities or lack of experience and knowledge, unless they have been given supervision or instruction concerning use of the appliance by a person responsible for their safety.
2. Children should be supervised to ensure that they do not play with the vacuum cleaner.
3. Keep ends of the hose, telescopic tube and other openings away from your face and body.
4. Do not operate the vacuum cleaner too close to heaters, radiators or other hot surfaces.
5. Do not use the appliance to pick up flammable items or combustible liquids (i.e. petrol, hot ashes, cigarettes, matches, explosive materials or anything burning) or use in areas where such substances or items may be present.
6. Do not use the appliance to pick up toxic materials (i.e. chlorine, bleach, ammonia).
7. Before vacuuming, remove any large objects from the floor or cleaning surface in order to prevent damage to the filter.
8. Always check the power cord before use. The power cord and the power plug should be in a good condition and must not be damaged. If the power supply cord is damaged or defective, it must be replaced by the manufacturer, its service agent or similarly qualified persons in order to avoid a hazard.
9. Do not extend the power cable beyond the yellow mark.
10. Do not pull or carry the appliance by the power cable, use the power cable as a handle or pull the power cable around edges or corners. Avoid running the appliance over the power cable.
11. Ensure the appliance is switched off before unplugging.
12. Do not unplug by pulling on the power cord. To unplug, grasp the power plug not the power cord and gently pull the power plug from the power socket. Use only Australian and New Zealand electrical safety approved extension cords.
13. Hold the power plug when rewinding the power cord. To prevent accidental injury do not allow the power plug to whip when rewinding.
14. Do not handle or operate the appliance with wet hands. Follow electrical safety precautions at all times.
15. To prevent electrical shock, do not immerse the appliance, power cord or power plug into water or any other liquids.
16. Do not use the machine to vacuum water or liquids, this vacuum is for dry household use only.

17. To prevent electrical shock, do not use the vacuum cleaner outdoors or on wet surfaces.
18. Extreme caution should be exercised when using the appliance on stairs.
19. Never clean the vacuum cleaner or any of the electrical parts, especially the electrical connections with water or liquid cleaners.
20. Do not attempt to change the attachments while the appliance is plugged into the mains power supply. First switch off and remove the power plug from mains power supply. Use only the manufacturer's recommended accessories.
21. Ensure the appliance is disconnected from the mains power supply before connecting the hose to the unit.
22. Do not operate or use the appliance without the dust bag and/or filters in place.
23. If the air inlet, floor head or the telescopic tube is blocked, switch off the cleaner straight away and disconnect the power plug from power supply. First clear the blocked object before attempting to start the cleaner again.
24. Do not leave the appliance unattended when it is connected to a mains power supply.
25. Before carrying out any maintenance service or cleaning the filters, always switch off the vacuum cleaner and disconnect the power plug from power supply.
26. Do not use the vacuum cleaner if it is damaged or breaks down. Check the electrical components regularly for defects. If connection cables, electrical hoses, electrical contacts and electric tubes are damaged, have them replaced immediately.

27. Never attempt to make any modifications to the vacuum cleaner.
28. Always store the appliance indoors, in a cool, dry place.
29. Damage caused by improper use or by not observing the instructions in this manual will void the warranty.

Vacuum Cleaner with Powerhead

1. The electric hose contains electrical connections;
 - Do not immerse in water.
 - The hose should be checked regularly and must not be used if damaged.
 - The vacuum cleaner handle contains electrical connections. The handle is not a serviceable part.
 - The vacuum cleaner rod contains electrical connections. The rod is not a serviceable part.
 - The vacuum cleaner powerhead contains electrical connections. The powerhead is not a serviceable part.
2. Use the powerhead only for vacuuming dust and dry substances in the home.
3. To avoid damage to the power cable never run over the power cable with the powerhead.
4. Never touch the brush roller while the vacuum cleaner is connected to the mains power supply.
5. To prevent unnecessary wear on the powerhead, keep the powerhead moving while in operation.
6. Keep hair, hands and feet away from the rotating brush while the powerhead is running.



Assembly



IMPORTANT! Always remove the power plug from the power supply before fitting or removing accessories! **LIVE PARTS** within the hose, rod and powerhead.



1. Flexible Hose

Fitting:

Insert the flexible hose into the hose inlet of the vacuum. Press until it clicks into position.

Removing:

Press the two buttons and gently pull to release the flexible hose.



2. Handle & Rod

Note: Ensure that the powerhead switch located on the handle is in the “Off” position before fitting the handle to the rod. When not using the powerhead, ensure that the Powerhead On/Off Button is in the “Off” position.

- Gently insert the handle into the telescopic tube and push until it clicks into place.
- Place the powerhead onto the floor and gently insert the telescopic tube into the powerhead. Push until it clicks into place.



Accessories (continued)



Powerhead

Deeply cleans carpets by effectively lifting and removing deeply embedded dust and dirt. The height of the powerhead can be adjusted to be used on different types of carpet.

Note: not recommended for use on hard floors.

WARNING! Seek advice from carpet manufacturers before using the motorised powerhead on woollen or delicate carpets.



Carpet



Hard Floors

Combination Floor Tool

This multi purpose combination floor tool easily switches from a carpet cleaning tool to a hard floor cleaning tool.



Crevice Tool

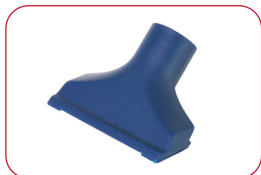
Eliminates dust from hard to reach places such as from corners and in between cushions.



Dusting Brush

Cleaning blinds, bookshelves and lampshades is made easy with this dusting brush.

Accessories



Upholstery Tool

For vacuuming furniture and upholstery.



Mini Hand Turbo Tool

Ideal for removing pet hair from upholstery and furniture. This accessory features a transparent case so that you can easily see and remove any blockages that may occur.

Safety Precautions:

1. Keep hair, hands and feet away from the rotating brush while the turbo brush is running.
2. Do not run the turbo tool over electric cables and string.
3. Do not use the turbo tool on pets.
4. The turbo tool will operate when it is connected to a running vacuum. If children are present, make sure to turn the vacuum off and unplug the power plug from the power supply when leaving the turbo tool unattended.
5. Do not attempt to service or unclog the turbo tool while the vacuum is running.



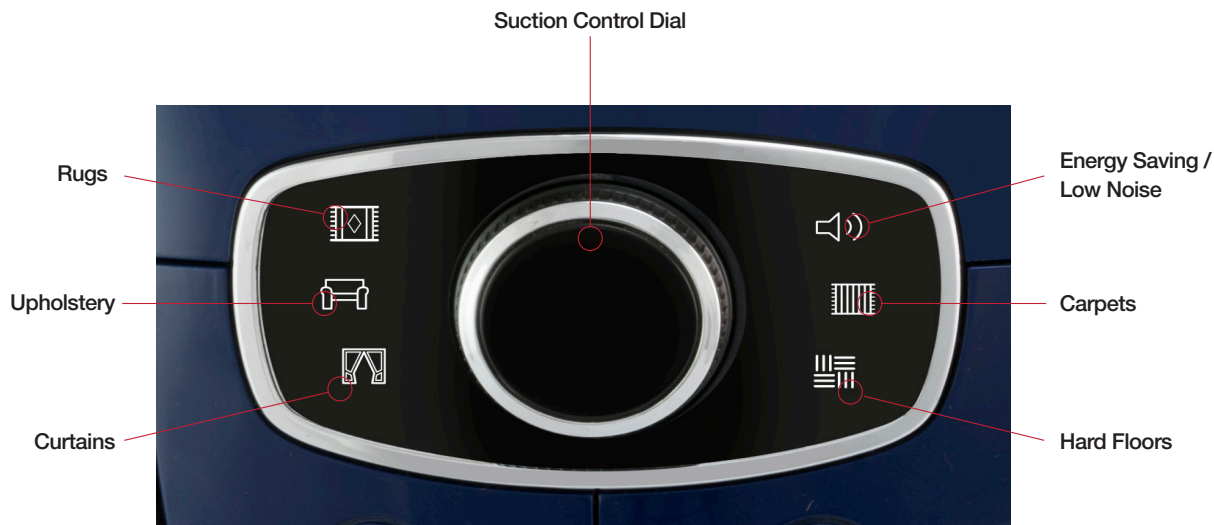
Flexible Brush

Removing dust from hard to reach places like shelves, bookcases and cupboards is made easy with this flexible brush attachment.

Instructions for Use

Using the Suction Control Dial

The suction power can be regulated by using the Suction Control Dial to achieve optimum cleaning results. To change the suction power to suit a particular cleaning task, simply turn the dial to point at the appropriate symbol.



Blockage Indicator

If there is a blockage in the cleaner the suction control symbols will flash and the Suction Control Dial light will turn red. If this happens, switch off the cleaner and remove the power plug from the power supply. Check that there are no blockages in the filters, hose and hose inlet.



IMPORTANT! Always remove the power plug from the power supply before fitting or removing accessories.



Turning On/Off the Cleaner

1. Unwind a sufficient length of cable. The yellow mark on the power cable shows the ideal cable length.
DO NOT extend the cable beyond the red mark.
2. Insert the power plug into the power supply.
3. Press the On/Off button to turn the vacuum On or Off.



Using the Handle

1. Press the On/Off button on the handle to operate the powerhead.
2. The Air Relief Valve can be used to regulate the suction power. To reduce the suction power, push the Air Relief Valve backwards.



Rewinding the Power Cable

1. Press the On/Off Button to turn off the vacuum.
2. Unplug the power cable from the power supply.
3. To rewind the power cable, press the Cable Rewind Button with one hand and guide the power cable with the other hand to ensure that it does not whip.

Maintenance

IMPORTANT! Always remove the power plug from the power socket before performing any maintenance.

Vacuum Cleaner Storage

When not in use, ensure that the cleaner is disconnected from the power supply and that the cable is fully retracted. The combination floor tool can be stored in the floor park clip. The powerhead must be stored separately.

Replacing the Dust Bag

Note: only use the dust bag supplied or recommend by the manufacturer to avoid causing damage to the machine and voiding the warranty.



Always operate the cleaner with the dust bag installed. If the dust bag is not installed or installed incorrectly, the dust bag cover may not close completely.

1. Remove the hose from the hose inlet.
2. Open the Dust Bag Cover.



3. Remove the bracket and the dust bag assembly.





4. Remove the dust bag when it is full and replace with a new dust bag.
5. Reinsert the bracket and dust bag assembly.
6. Gently close the Dust Bag Cover, ensuring it clicks into place.

Cleaning and Replacing the Pre-Motor Filter

IMPORTANT! Always remove the power plug from the power socket before performing any maintenance.



The pre-motor filter should be replaced every six months or when it becomes visibly dirty.

Always operate the cleaner with clean filters; otherwise, there may be a reduction in the suction power or motor damage may result.

Note: Do not use a washing machine to wash the filter or a hair drier to dry the filter.

1. Open the Dust Bag Cover, remove the bracket and the dust bag assembly.
2. Gently remove the pre-motor filter.
3. Replace with a new filter or clean as described.

Maintenance (continued)

Cleaning and Replacing the Rear Motor HEPA and Carbon Filter



The Rear Motor HEPA and Carbon Filter is installed behind the exhaust grille. This filter is washable, however frequent washing of the carbon filter can reduce the life of the carbon filter. When dust or dirt is visible on the surface of the HEPA filter, the filter should be replaced or washed with lukewarm water to maintain efficient suction.

Note: *It is recommended to replace the filter every 6 months or when it becomes visibly dirty.*



1. Remove the Exhaust Grille to access the Rear Motor filter.
2. Gently remove the Rear Motor filter as shown.
3. Replace with a new filter or clean as described.

Cleaning the Mini Hand Turbo Brush

WARNING! *Ensure the Mini Hand Turbo Brush is disconnected from the cleaner when performing any maintenance.*



1. To remove the clear cover the collar lock must be in unlocked by twisting the collar lock anticlockwise.

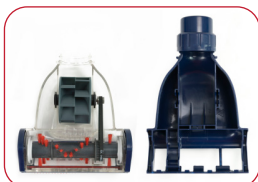




2. The rotating bristles must be unlocked and in the upward position. To unlock the rotating bristles push the lock button on the side of the turbo brush to the downward position.



3. Remove the clear cover.



4. Remove any dirt or hair from the roller brush.



5. Replace the clear cover.
6. Lock the collar lock by twisting clockwise.
7. Rotate the rotating bristles to the downward position and lock into place by pushing the lock button on the side of the turbo brush to the upward position.

Maintenance (continued)

Cleaning the Agitator Bar

WARNING! Ensure that the cleaner is disconnected from the power supply and the powerhead is disconnected from the rod before performing any maintenance.



Note: The agitator bar must be free of debris for effective cleaning and for maximum suction.

1. Disconnect the motorised powerhead from the vacuum rod and turn it over to inspect the agitator bar.
2. If a build-up of debris is wound around the agitator bar, remove by carefully cutting with scissors. Avoid damaging or cutting the bristles.



Changing the Motorised Powerhead Drive Belt



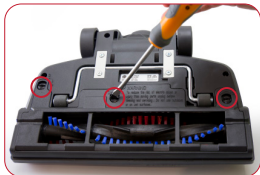
WARNING: To reduce the risk of electric shock, ensure that the power is switched off and the power plug is disconnected from the power supply before performing any cleaning, maintenance or troubleshooting checks. Failure to do so may result in electric shock or personal injury.

CAUTION! The powerhead, hose and rod contain electrical connections. The powerhead, hose and rod are not serviceable parts. Please return the product to your nearest Godfreys store if the powerhead, hose and/or rod are faulty.

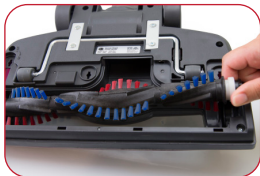


Depending on frequency of use, the motorised powerhead drive belt will occasionally require changing.

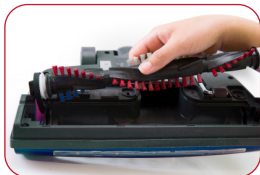
1. Disconnect the powerhead from the telescopic tube.



2. Turn the powerhead upside down and turn the three locking rods anti-clockwise to unlock the bottom plate.

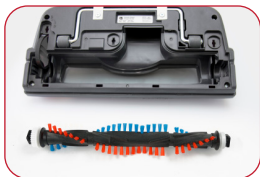


3. Firstly lift the side of the rotating brush without the belt attached. Then lift the end cap where the belt loops around.



4. Slide the old belt off the drive shaft and then the end cap. If the belt is broken, remove all the broken pieces.

5. Place the new belt over the drive shaft first and then the end cap. Make sure the lettering on the belt is outward facing. Insert the end cap into the groove.



6. Holding the rotating brush, insert it into the end cap first and then into the groove on the opposite side.

7. Replace the bottom plate.

Troubleshooting

Problems and Solutions

Please contact Godfreys customer support and service hotline Australia on 1800 815 270 or New Zealand on 0800 282 288 to find your local spare parts provider.

Fault	Solutions
The cleaner will not turn on.	Check that the power cable is inserted securely; remove from the power supply and then reinsert into the power supply. Check that the On/Off switch is in the "On" position.
The vacuum performance is deteriorating.	Switch off the machine. Check the appliance to ensure there are no blockages. Clear any blockages that may be found. Check that the pre-motor filter is not dusty; clean or replace the pre-motor and rear-motor filters. Check whether the dust bag is full; replace the dust bag if it is full.
The cleaner makes an abnormal sound when switched on.	Turn off the cleaner immediately. Check the appliance to ensure there are no blockages. Clear any blockages that may be found. Check the powerhead is installed securely.
Powerhead not working.	Check that the On/Off button is in the "On" position. Check the installation of the powerhead is correct. Turn off the cleaner, let it cool down for 20 minutes. Remove the power brush and clean any big objects trapped around the roller bar. Check there is no object pressing the top of the powerhead. Adjust the height of the power head to suit the area to be cleaned.
Hand turbo tool is not working.	Ensure there are no blockages in the brush roller of the hand turbo tool.



Spare Parts

Description	Product Code
Filter Set (Pre-motor & Rear Motor Filters)	32200931
Dust Bag Bracket Assembly	33151857
Dust Bags (5 Pack)	32420366
Hose	31220490
Power Head	11400129
Agitator Bar	33701796



allergy

Bagged Vacuum Cleaner with Deep Cleaning Powerhead

Conditions of warranty

Your Hoover Allergy, in the case of domestic use, has a two years warranty against product defects and failures when the product is used in accordance with the terms and conditions of this warranty statement.

This warranty is provided by Electrical Home-Aids Pty Limited ABN 62 007 539 577. This warranty commences from the original date of purchase and is not transferable. You are required to retain your original proof of purchase for any claims under this warranty. This warranty is valid only in the country where the cleaner is purchased.

Your Hoover Allergy must be operated in accordance with these instructions and used only for domestic household cleaning to remove dry dirt and dust from household carpets, flooring and fabrics. Your Hoover Allergy is not fit to be used as an industrial cleaner, and is not designed for the collection of vitreous building material including particle board, construction products and similar products such as wood/fibres, cement, fillers, fibre glass etc or excessive or frequent sand. The infrequent pick-up of these materials may be harmful to your cleaner and will void this warranty.

Accessories and consumables including dust bags and filters, unless defective in manufacture, are not subject to this warranty. In order to prolong the life of accessories and consumables, regular care and maintenance is recommended.

Refer to the instruction manual for further regarding the use and care of your Hoover Allergy, as misuse or failure to follow the instructions voids this warranty.

In the event of service or advice being needed, or if you would like to make a claim under this warranty, please immediately stop using the Hoover Allergy and contact Electrical Home-Aids Pty. Limited, Brandon Office Park, Building 3, First Floor, 530-540 Springvale Road, Glen Waverley Victoria 3150, or on 1800 815 270 (AUS) or 0800 282 288 (NZ), Monday-Friday 9am-5pm AEST or customerservice@godfreys.com.au.

The decision to repair or replace the cleaner is at the discretion of Electrical Home-Aids Pty. Ltd depending on the circumstances and requirements of any applicable law. If Electrical Home-Aids Pty. Ltd decide to repair or replace your Hoover Allergy, it will do so at its own cost. Any transportation costs involved in a claim under this warranty shall be borne by the claimant.

Electrical Home-Aids Pty. Limited is unable to accept responsibility under this warranty for any repair work not carried out by an authorised Service Agent, or any defect arising from or in connection with the use of non-genuine parts. If any part is no longer available or manufactured, Electrical Home-Aids Pty. Limited will replace it with a genuine functional replacement part. This warranty does not apply to the cost of replacing any parts of the Hoover Allergy due to normal wear and tear, alterations, improper installation, physical abuse, misuse or accidental damage.

If proof of purchase cannot be provided at the time of a warranty claim or service, any work carried out on the Hoover Allergy will be at claimant's cost.

The repair of the Hoover Allergy under this warranty does not extend the original period of warranty. If your Hoover Allergy is replaced under this warranty, the replacement will be covered by this warranty for the remainder of the original warranty period. However, you may still have statutory rights after this time.

The benefits conferred by this warranty are in addition to all other rights and remedies in respect of the product as outlined under the Competition and Consumer Act 2010 (Cth) and other State and Territory laws.

Our goods come with guarantees that cannot be excluded under the Australian Consumer Law. You are entitled to a replacement or refund for a major failure and compensation for any other reasonably foreseeable loss or damage. You are also entitled to have the goods repaired or replaced if the goods fail to be of acceptable quality and the failure does not amount to a major failure.



Contact Electrical Home-Aids Pty. Limited with any product queries:

Australia: 1800 815 270
New Zealand: 0800 282 288
customerservice@godfreys.com.au
www.godfreys.com.au or www.godfreys.co.nz

Mail:

Godfreys
Brandon Office Park, Building 3, First Floor
530-540 Springvale Road. Glen Waverley Victoria 3150